



# Rabr Polyclonal Antibody

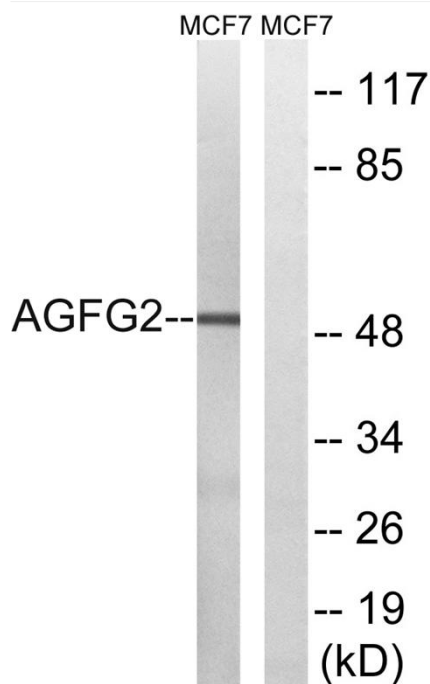
<b>Catalog No</b>	YP-Ab-04108
<b>Isotype</b>	IgG
<b>Reactivity</b>	Human;Mouse
<b>Applications</b>	WB;ELISA;IHC
<b>Gene Name</b>	AGFG2
<b>Protein Name</b>	Arf-GAP domain and FG repeat-containing protein 2
<b>Immunogen</b>	The antiserum was produced against synthesized peptide derived from human AGFG2. AA range:91-140
<b>Specificity</b>	Rabr Polyclonal Antibody detects endogenous levels of Rabr protein.
<b>Formulation</b>	Liquid in PBS containing 50% glycerol, 0.5% BSA and 0.02% sodium azide.
<b>Source</b>	Polyclonal, Rabbit,IgG
<b>Purification</b>	The antibody was affinity-purified from rabbit antiserum by affinity-chromatography using epitope-specific immunogen.
<b>Dilution</b>	WB 1:500-2000;IHC-p 1:50-300; ELISA 2000-20000
<b>Concentration</b>	1 mg/ml
<b>Purity</b>	≥90%
<b>Storage Stability</b>	-20°C/1 year
<b>Synonyms</b>	AGFG2; HRBL; RABR; Arf-GAP domain and FG repeat-containing protein 2; HIV-1 Rev-binding protein-like protein; Rev/Rex activation domain-binding protein related; RAB-R
<b>Observed Band</b>	49kD
<b>Cell Pathway</b>	membrane,
<b>Tissue Specificity</b>	Brain,Kidney,Placenta,
<b>Function</b>	domain:Contains FG repeats and 4 N-P-F repeats.,similarity:Contains 1 Arf-GAP domain.,subunit:Interacts with EPS15R.,
<b>Background</b>	ArfGAP with FG repeats 2(AGFG2) Homo sapiens This gene is a member of the HIV-1 Rev binding protein (HRB) family and encodes a protein with one Arf-GAP zinc finger domain, several phe-gly (FG) motifs, and four asn-pro-phe (NPF) motifs. This protein interacts with Eps15 homology (EH) domains and plays a role in the Rev export pathway, which mediates the nucleocytoplasmic transfer of proteins and RNAs. Alternatively spliced transcript variants have been described, but their biological validity has not been determined. [provided by RefSeq, Feb 2013],

**matters needing attention**

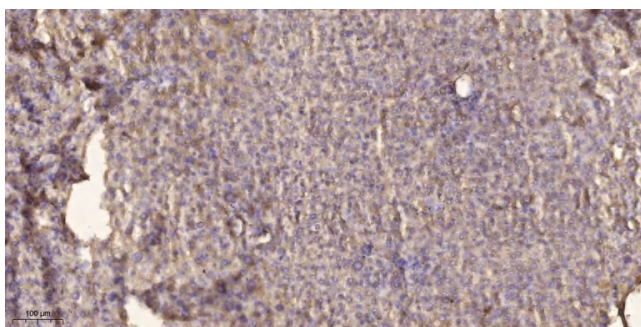
Avoid repeated freezing and thawing!

**Usage suggestions**

This product can be used in immunological reaction related experiments. For more information, please consult technical personnel.

**Products Images**

Western blot analysis of lysates from MCF-7 cells, using AGFG2 Antibody. The lane on the right is blocked with the synthesized peptide.



Immunohistochemical analysis of paraffin-embedded human liver cancer. 1, Antibody was diluted at 1:200(4° overnight). 2, Tris-EDTA, pH9.0 was used for antigen retrieval. 3, Secondary antibody was diluted at 1:200(room temperature, 45min).